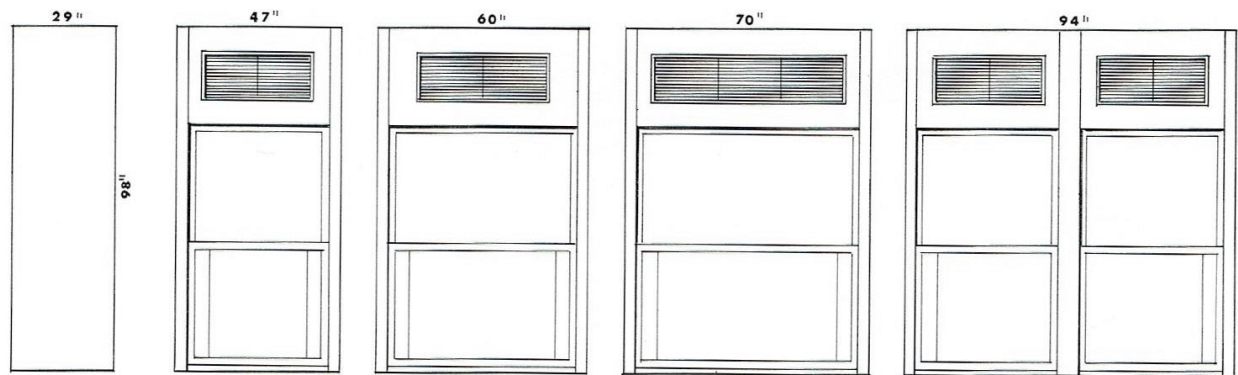


STANDARD WALK-IN TYPE FUME HOODS

These hoods embody function and economy. The exterior is fabricated of electro zinc plated steel with an acid resistant finish. The front posts and air by pass grill is of stainless steel. The interior lined interior features lower, intermediate and upper adjustable baffles. The work ledges and floor slabs are of 1-1/4" thick Colorlith. The double hung counterbalanced stainless steel sash have safety glass. These hoods, like all other hoods can be modified to meet specific requirements.



END VIEW

FUM-1047

FUM-1060

FUM-1070

FUM-1094

Each of these hoods is equipped with two cup sinks, two cold water gooseneck Faucets, two single gas pedestals, and two 110 volt AC duplex electric receptacles. Illumination is provided by vapor proof fluorescent light fixtures.